

What NO-MA Values

The Borderless Art Museum NO-MA opened in June, 2004, with the word "borderless" at its heart. Borderless art is the concept behind all exhibits of this museum, which hopes to introduce the various forms of expression, such as formative art by artists with disabilities and modern art, without any division or boundaries. Though NO-MA is operated by a social welfare organization, our mission is not confined to creating a space for disabled people, but rather to build an establishment that invites visitors to question what the essence of art is and explore the meaning of expression and representation.

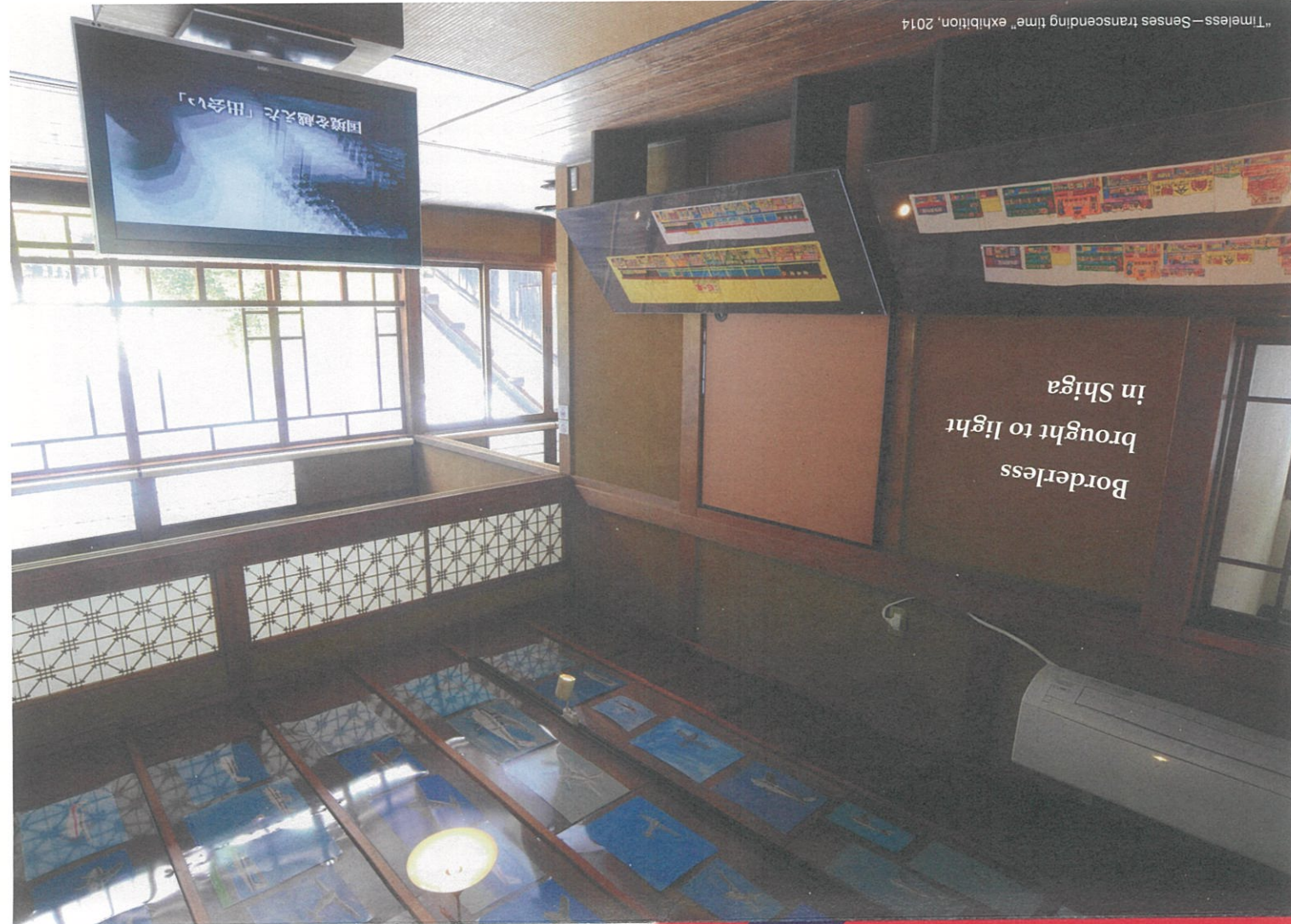
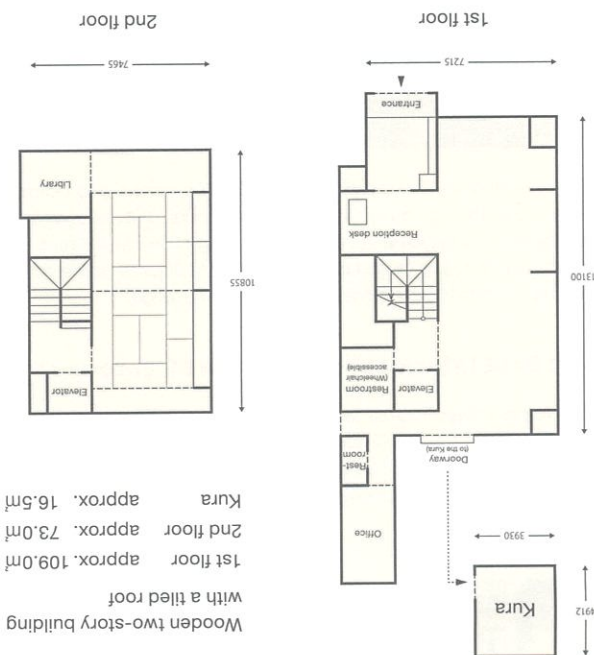
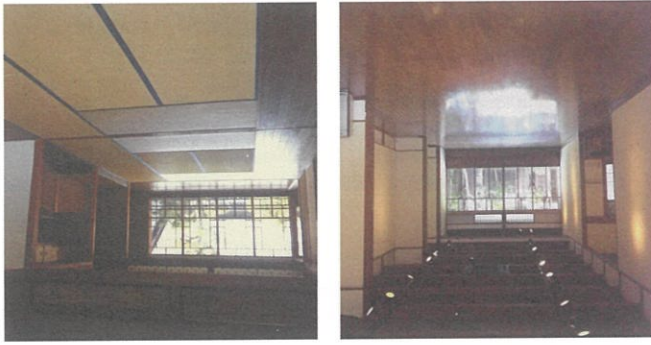
NO-MA is a museum that uses borderless art as a platform to showcase the fundamental appeal and power that lies in expression.

Rent Our Space

We offer our museum for rental during periods between exhibitions. We encourage creators to use it as a space to display their work.

《Rental Information》

A set of 1 week, 6 days, from Tuesday through Sunday will be the basic unit for renting the space. This does not include installation/preparation and deinstallation/removal days for exhibitions.



"Timeless—Senses transcending time" exhibition, 2014

Borderless Art Museum NO-MA —A rebirth of an early Showa era (1926-1989) tradesman's house in a Preservation District for Groups of Traditional Buildings

Shiga prefecture is home to Omi Gakuen, a school which was established in 1946, thanks to the works of Ichiji Tamura, Taro Ikeda, and Kazuo Itoga, who is known as "the father of welfare for the handicapped" in Japan. Omi Gakuen became the pioneer for art-making using clay, which was kindled during their ceramics class, and their ideology and practices have been passed down to welfare facilities in the prefecture.

The activity grew in several locations over the course of 50 years and the need for a museum to exhibit the artwork by disabled people increased. When searching for an ideal exhibition space, the Noma residence, a tradesman's house in Omihachiman, was taken into consideration. Thus, in 2004, the Borderless Art Gallery NO-MA was born. In 2007, it was granted museum status and became the Borderless Art Museum NO-MA.



Opening Hours:

11:00 am - 5:00 pm

Closed:

Mondays (the following Tuesday if the Monday is a national holiday), Installation periods for exhibitions, and New Year holidays.

Admission:

General admission: ¥200 - ¥300*
High school and university students: ¥150 - ¥250*
(¥50 discount for groups of 20 or more people)
Junior high school students and younger: Free
Visitors with disabilities and their one attendant: Free
*Admission fees vary for each exhibition

Mobility Access:

Galleries and facilities are wheelchair accessible.
(Accessible toilets, elevator, reserved parking available)

Information for Groups and Field Trips

The group discount is applicable for groups of 20 or more. For school visits and visitors with educational purposes, depending on our availability, we offer coordinating tour programs. We encourage you to make the most of NO-MA as a place to encounter and explore captivating artworks. *If you plan to visit the museum as a group, we recommend you contact us in advance for a smooth experience.

Access

By Train and Bus:

From bus station No.6 at the north exit of Omihachiman station (A19) on the JR Biwako line, take the Ohmi Railway Bus bound for Chomeiji. 10 min. ride to Osugicho bus stop. Approx.8 min. walk to NO-MA.

By Car:

Approx.25 min. drive from the Ryuo interchange on the Meishin Expressway. *As we have limited parking space, we ask that you use municipal parking lots etc. when the parking lot is full.

By Rental Bikes:

You can rent a bicycle at Eki-rin-kun Omihachiman, located at the north exit of Omihachiman station (A19) on the JR Biwako line. Approx.15 min. bike ride to NO-MA.

Contact Information

Borderless Art Museum NO-MA

16 Nagahara-cho Kami, Omi-Hachiman-shi, Shiga-ken, Japan
Postal code: 523-0849

TEL/FAX 0748-36-5018 Available 11:00 am - 5:00 pm Tue-Sun
E-mail no-ma@lake.ocn.ne.jp URL <http://www.no-ma.jp/english.html>
Operated by Social Welfare Organization GLOW

English



Borderless Art Museum NO-MA

Borderless brought to light in Shiga

Borderless Art Museum
NO-MA



Interaction with the Local Community

We hold events linked with our exhibitions. Utilizing the exquisite environment surrounding us, we plan programs which combine workshops, walks around the town, and the arts, to nurture and treasure the relationship with the community. We also work together with educational institutions arranging outreach sessions and workshops using the museum space, and publish a community newsletter called Noma-no-Ma, to tell more people about NO-MA and its captivating artworks.



Research and Study

We have been conducting research on artworks of 368 artists (as of April 2018) all over Japan and in some Asian regions. We had not only NO-MA curators, but also people working in welfare, and in art, as researchers as well. Some of the artwork that was included in this research is now being highlighted as Art Brut. We hope to further extend our research to discover new artists and archive their works, both as data for study and for future exhibitions, as well as to cultivate a rich network for all people involved.

The "ing... Progressive forms of disabled people" exhibition, in collaboration with facilities and schools in Shiga Prefecture



This exhibition has been held every year since we opened. NO-MA works with welfare facilities and special needs schools in the prefecture to organize the planning committee for the exhibition, bringing in artworks and ideas from each facility, school, etc. We aim to promote artworks by disabled artists, connect staff members who work around formative art, and develop skills to support art activities.

Kazuo Itoga Music Festival



The festival hosts 200 artists, such as disabled people who express themselves through music or dance, their carers, and more, as a celebration for the recipient of the Kazuo Itoga Memorial Award. Every year, we have musicians who perform in Japan and the world join us in creating a borderless and captivating stage.

Art Brut Information & Support Center (a.k.a. AIS)

The AIS is a support desk for disabled artists, their families, and their carers to ask about any issues regarding the artists' creative activities. We advise on protecting the artist's rights and support create a trusted bond among the people who are involved with the artwork.



TEL 0748-46-8118
(Available on weekdays 9:00 am-5:00 pm)
FAX 0748-46-8228
Email artbrut_info@glow.or.jp

Working with Museums Worldwide

We worked on an exhibition in collaboration with the Art Brut Collection in Roseanne, Switzerland, from 2006, and held the "JAPON" exhibit from 2008 to 2009. The exhibition toured Japan as the "Art Brut / Souls Intersecting" exhibition (Shiga, 2008) and kindled the interest for Japanese Art Brut. Later, the Halle Saint-Pierre Museum in Paris, France, held the "Art Brut Japonais" exhibition (2010-2011) with artworks from 63 Japanese artists, which received a total of 120,000 visitors. The global attention to the Japanese Art Brut scene was not a temporary craze. From 2017 to 2018, the National Center for Contemporary Culture Le Lieu Unique in Nantes, France, held the "KOMOREBI" exhibition featuring Japanese Art Brut, and the world seems to become more intrigued year by year.



What is Art Brut

Art Brut is a French term which directly translates into 'raw art'. The phrase was coined in 1945 by artist Jean Dubuffet, meaning art born of pure impulse that expresses the passion that comes from within.

1 Omihachiman City Museum

[Local History Museum]

Built where the house of Taroemon Nishimura, an Omi merchant, used to be. The museum exhibits the city's archeology, folklore, and more, revealing to us the history of the Hachiman merchants' hometown.

[History and Folklore Museum]

A late Edo era merchant's house converted into a museum. Many of the daily scenes including the office of an Omi merchant, documents are displayed in its authentic state.

Hours: 9:00 am - 4:30 pm (Final admission at 4:00 pm)
Closed: Mondays (the following Tuesday if the Monday is a national holiday), the day after national holidays, and New Year holidays.
*Open every day through May, June, October, and November
☎ 0748-32-7048 / General admission ¥300, Elementary and junior high school students ¥150

2 Old Nishikawa Residence

The Nishikawa family traded tatami mat fabrics and mosquito nets. The building reflects the history of the Omi merchant family and is designated a Nationally Important Cultural Property.

Hours: 9:00 am - 4:30 pm (Final admission at 4:00 pm)
Closed: Mondays (the following Tuesday if the Monday is a national holiday), the day after national holidays, and New Year holidays.
*Open every day through May, June, October, and November
☎ 0748-32-7048 / General admission ¥300, Elementary and junior high school students ¥150

3 Old Ban Residence

The merchant, Shoemon Ban and his family operated with the company name 'Ogi-ya'. The building is a historical heritage that had been used as an elementary school, city hall, and a library in the Meiji period. The extraordinary float used in the Sagicho festival is also definitely worth seeing.

Hours: 9:00 am - 5:00 pm (Final admission at 4:30 pm)
Closed: Mondays (the following Tuesday if the Monday is a national holiday), and New Year holidays.
*Open every day through February, March, April, May, June, October, and November.
☎ 0748-32-1877 / General admission ¥400, Elementary and junior high school students ¥250

4 Hachimanyama Ropeway

Hop on at the foot of the mountain to enjoy a birds-eye view for approx. four minutes. The panorama view of the mountains and Omihachiman area shows a beautiful new color every season.

Hours: 9:00 am - 5:00 pm (Last ropeway going up leaves at 4:30 pm)
Open all through the year.
☎ 0748-32-0303 / Adults ¥880, Children ¥440 *Round-trip ticket

5 Kawara Museum

Not only is it filled with information on the local industry of Hachiman-gawara tiles, but the building itself is also embellished with Kawara tiles, becoming a part of the exhibit as well.

Hours: 9:00 am - 5:00 pm (Final admission at 4:30 pm)
Closed: Mondays (the following Tuesday if the Monday is a national holiday), the day after national holidays, and New Year holidays.
*Open every day through May, June, October, and November.
☎ 0748-33-8567 / General admission ¥300, Elementary and junior high school students ¥200

*For details on Group Discounts etc., please contact each facility directly.



Omihachiman - A town of culture and elegance

Omihachiman started as a town around a castle built by Hidetsugu Toyotomi, then developed into a commercial city. Known as the birthplace of Omi merchants, the charming townscape along Shinmachi Street, Nagaharacho Street, and Hachiman-bori, and the grounds of Himure Hachimangu Shrine are both designated a Preservation District for Groups of Traditional Buildings. The town is also known as the land where William Merrell Vories (Architect, 1880 - 1964), who left many modern architectural works, spent his adulthood and has around 20 Vories buildings. In recent years, the city has revitalized the tradesman houses which are now home to beautiful cafés, preserving the historical townscape.

Info Omihachiman Tourism Passport (¥1,500)

Show your Tourism Passport and enjoy facilities ① - ⑤ in addition to NO-MA. You can also receive benefits such as discounts in 27 shops within Omihachiman city.

For Purchase and Inquiries

Omihachiman Station North Exit Tourist Information Center

☎ 0748-33-6061

Haku-unkan (Haku-unkan Tourist Information Center)

☎ 0748-32-7003

You can purchase the Tourism Passport at the Omihachiman City Museum, Old Nishikawa Residence, Old Ban Residence, and Kawara Museum as well.